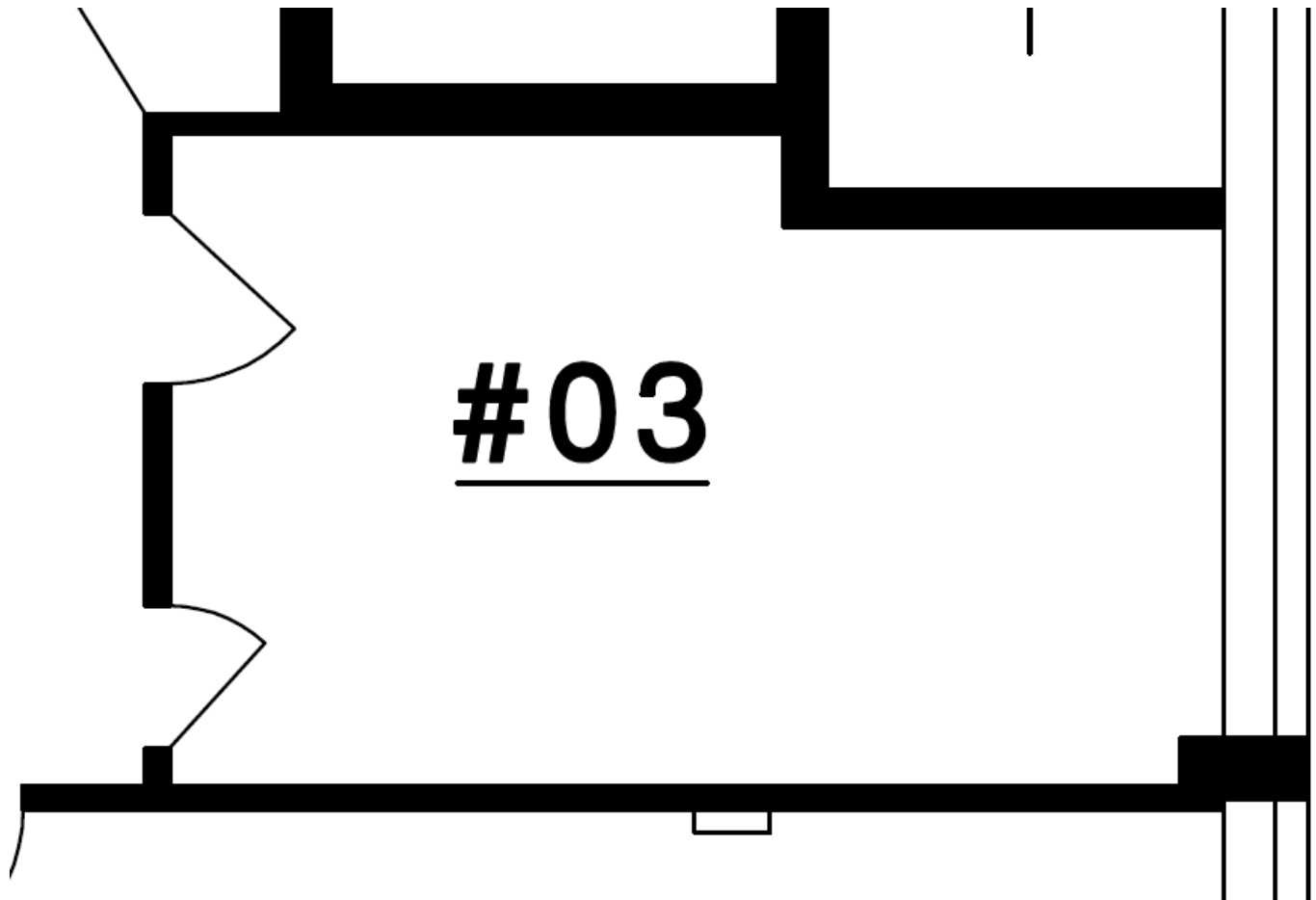
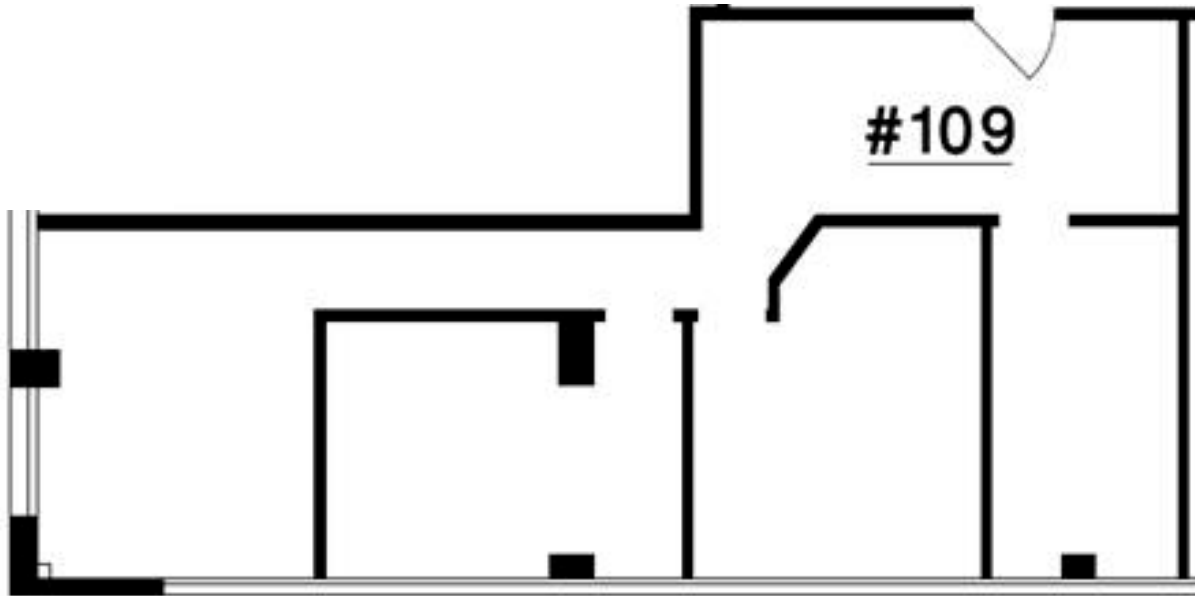


Suite 003

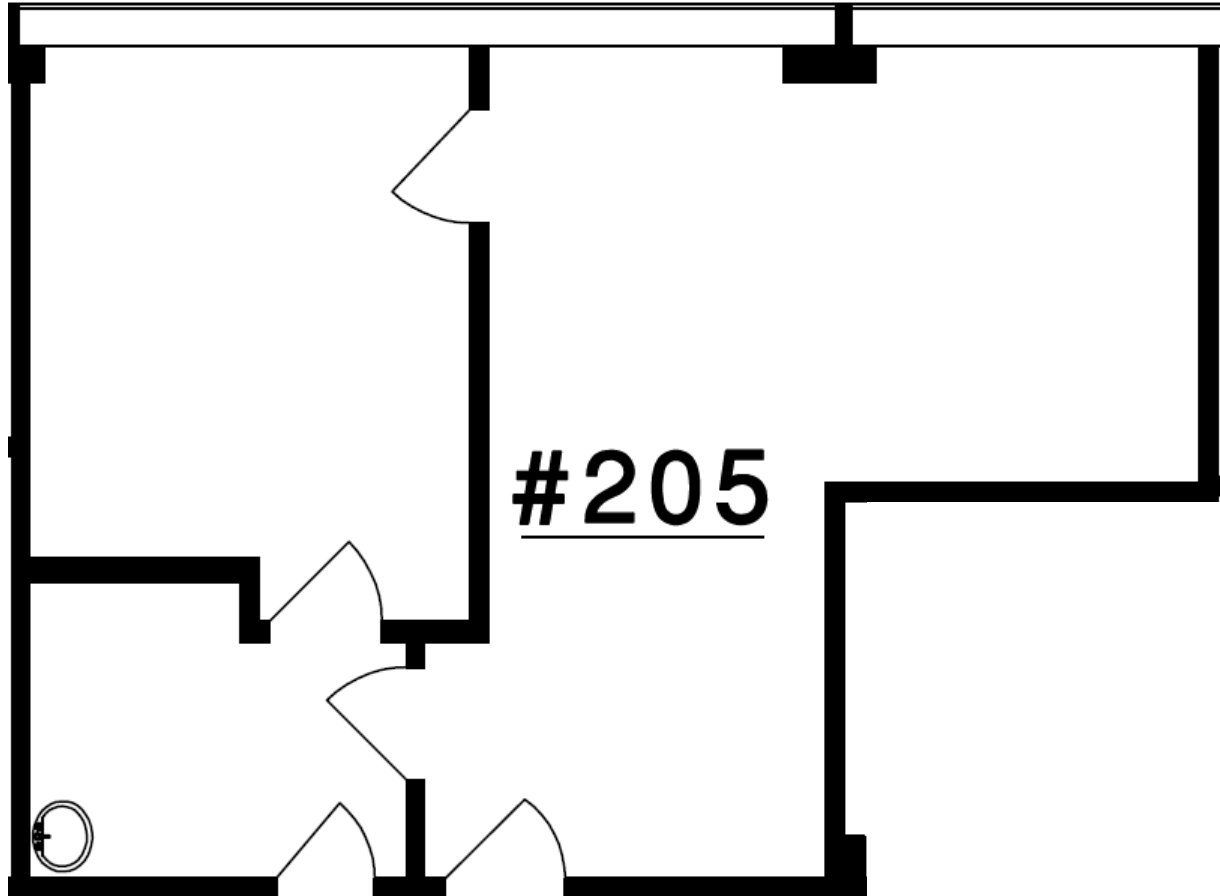


This 267 square foot space was formerly used as a café.

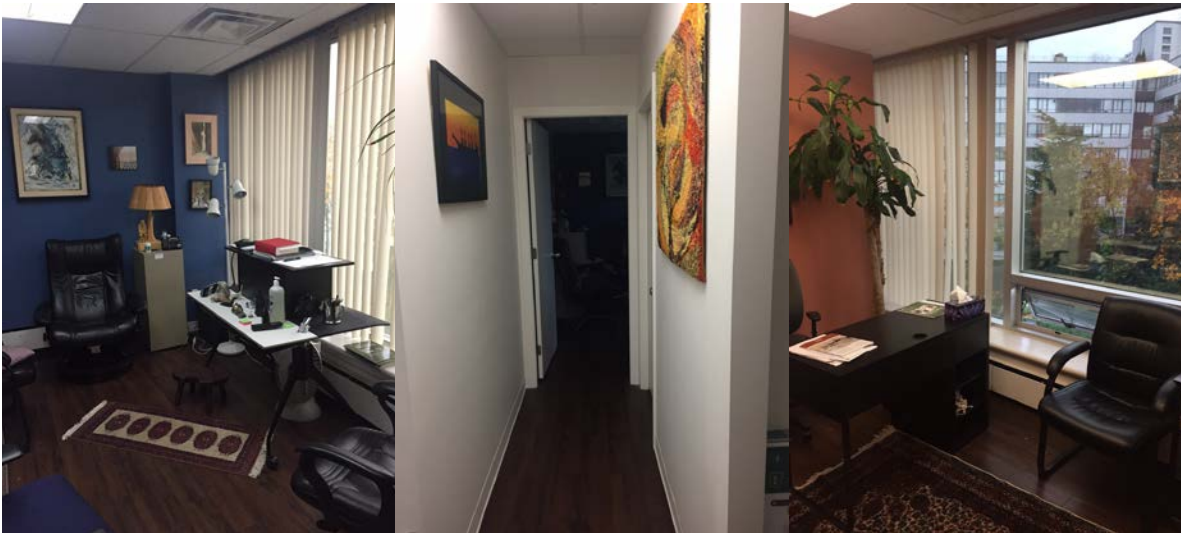
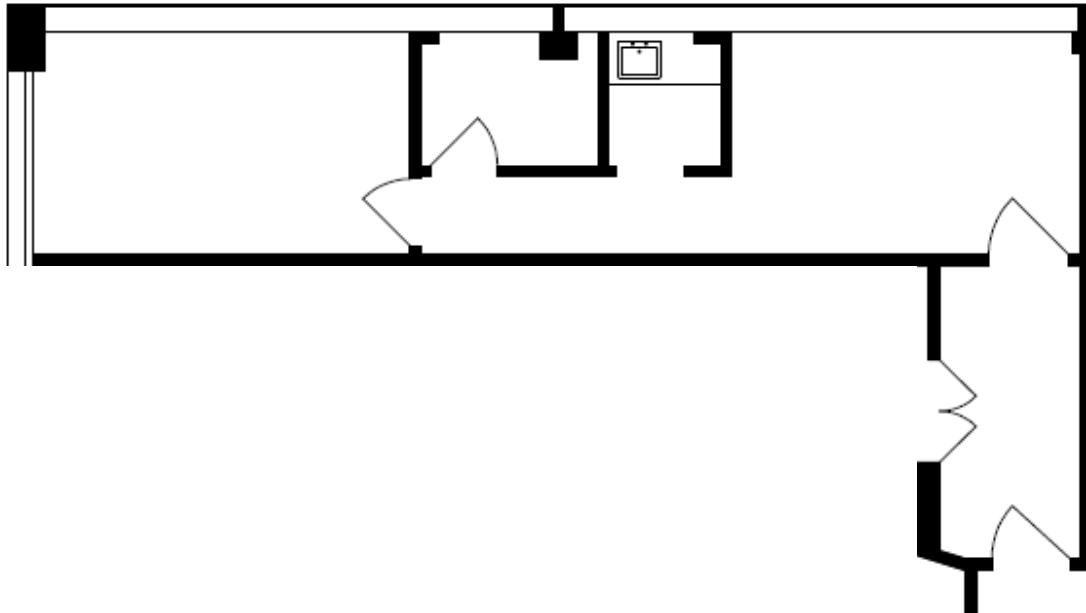
Suite 109



Suite 205

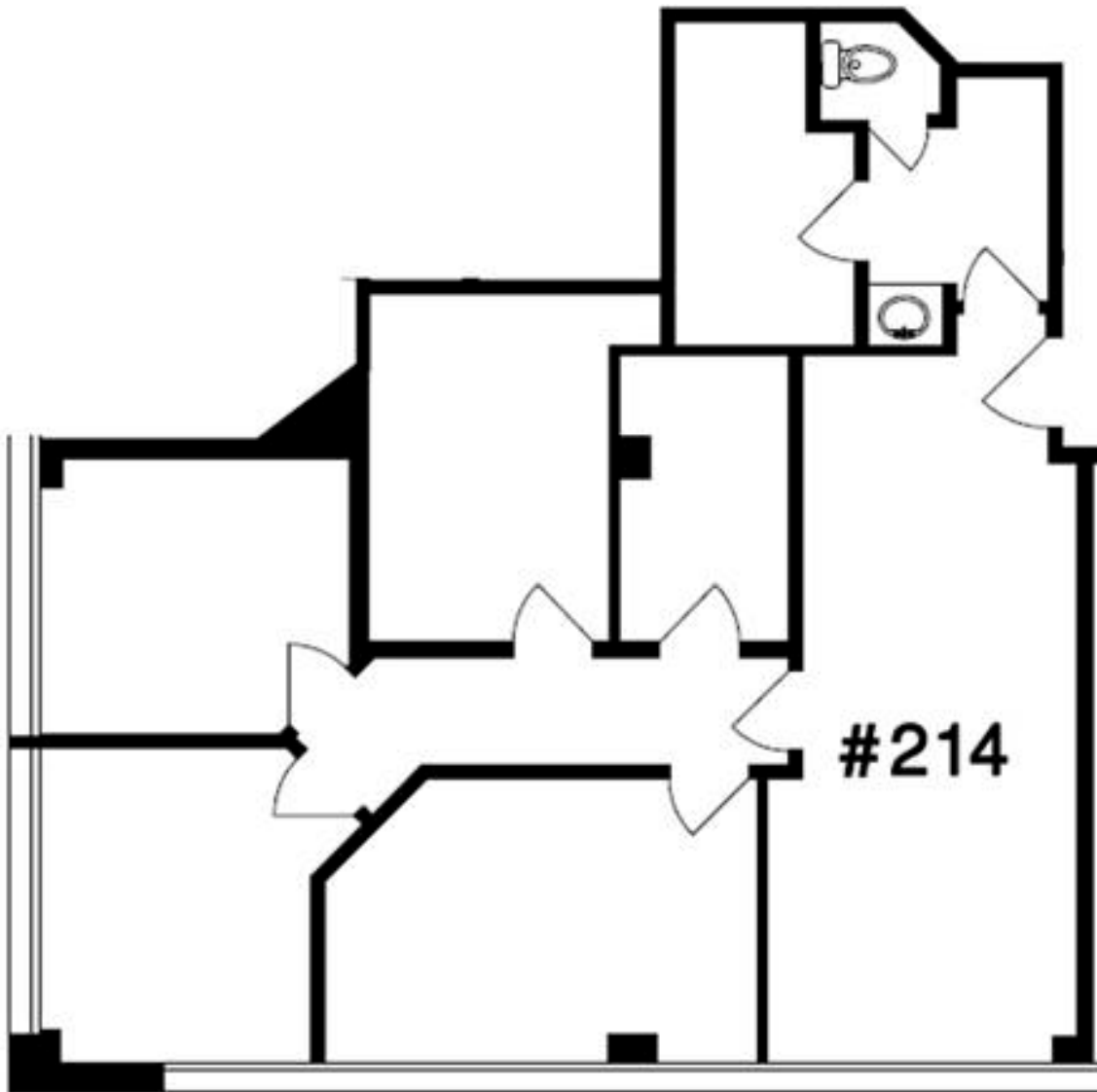


Suite 206

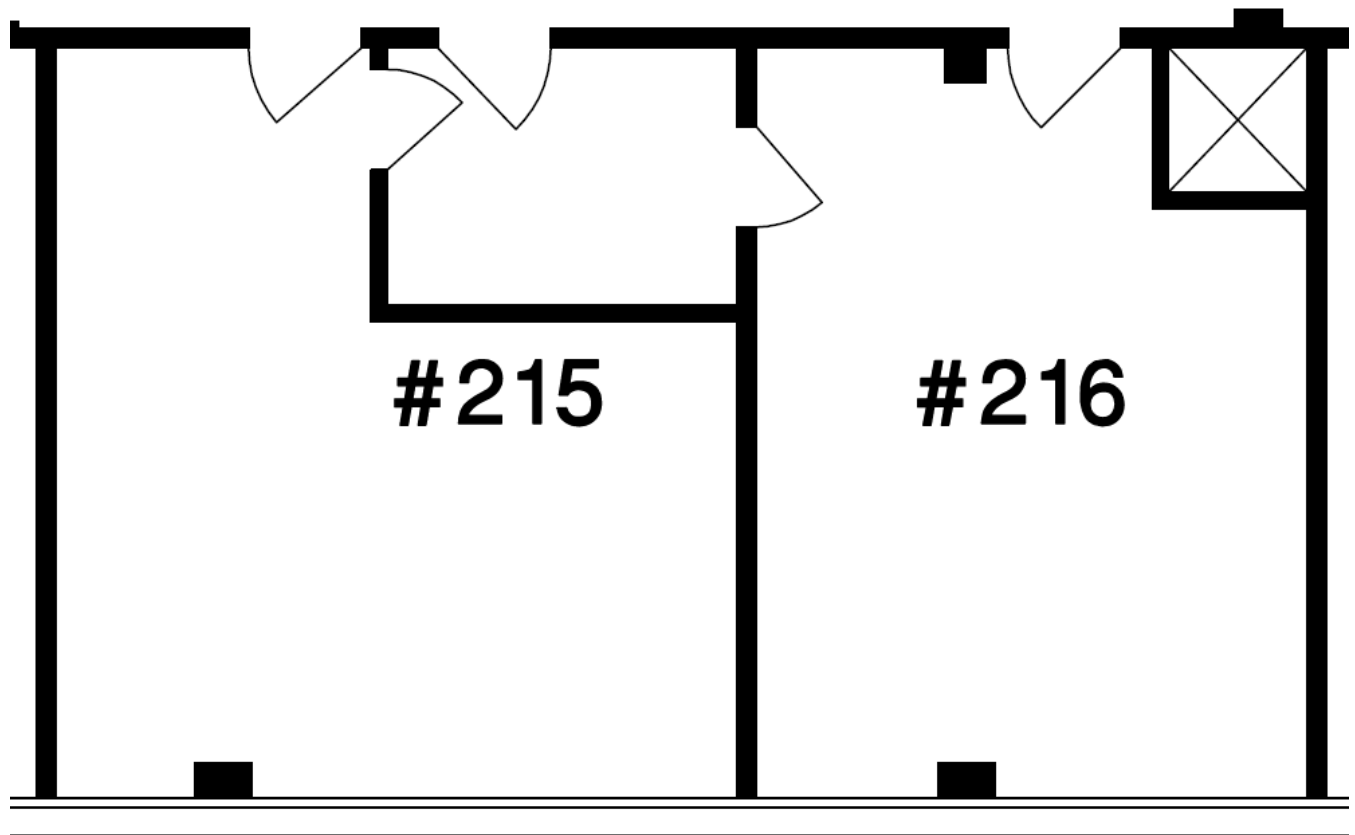


This 531 square foot space is located on the top floor with large windows overlooking Granville and Downtown Vancouver.

Suite 214

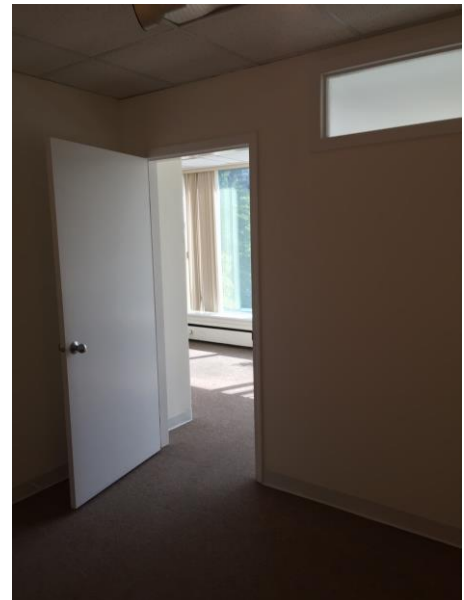
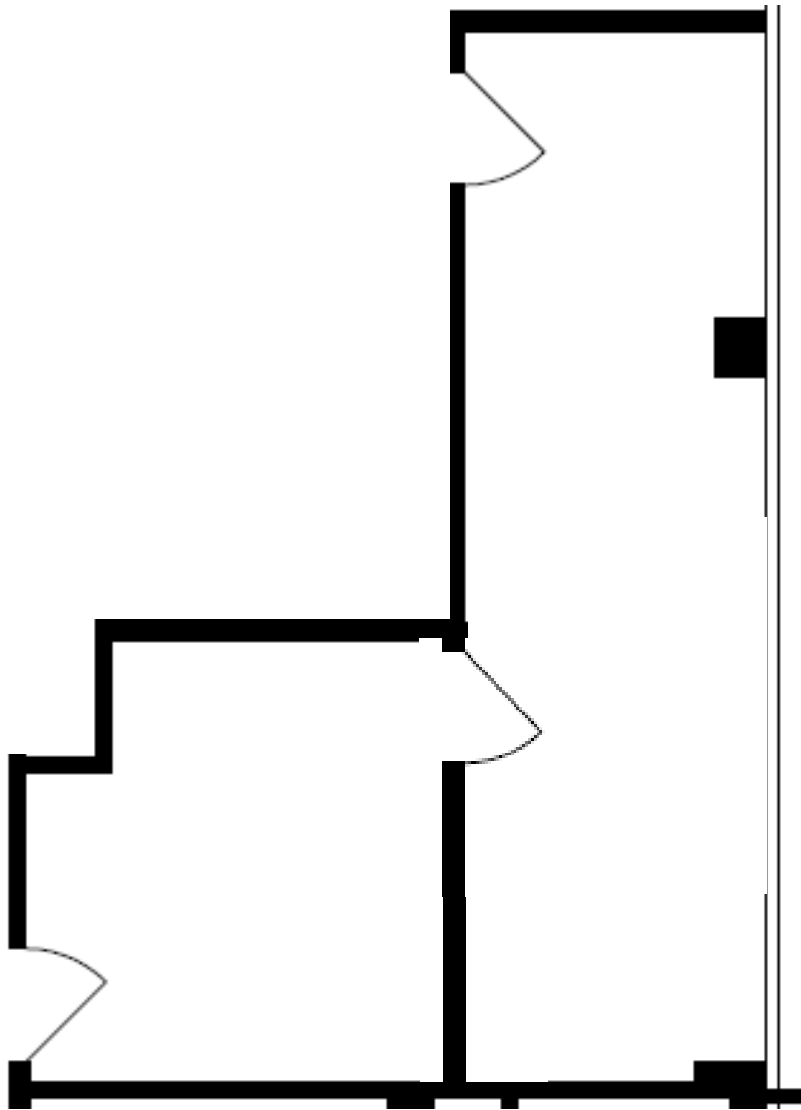


Suite 216



This 413 square foot space has a shared waiting area with Suite 215. The office is entirely open and has windows that overlook downtown Vancouver.

Suite 220



This 470 square foot space is located on the second floor. The suite has southern exposure and windows overlooking 16th Avenue.