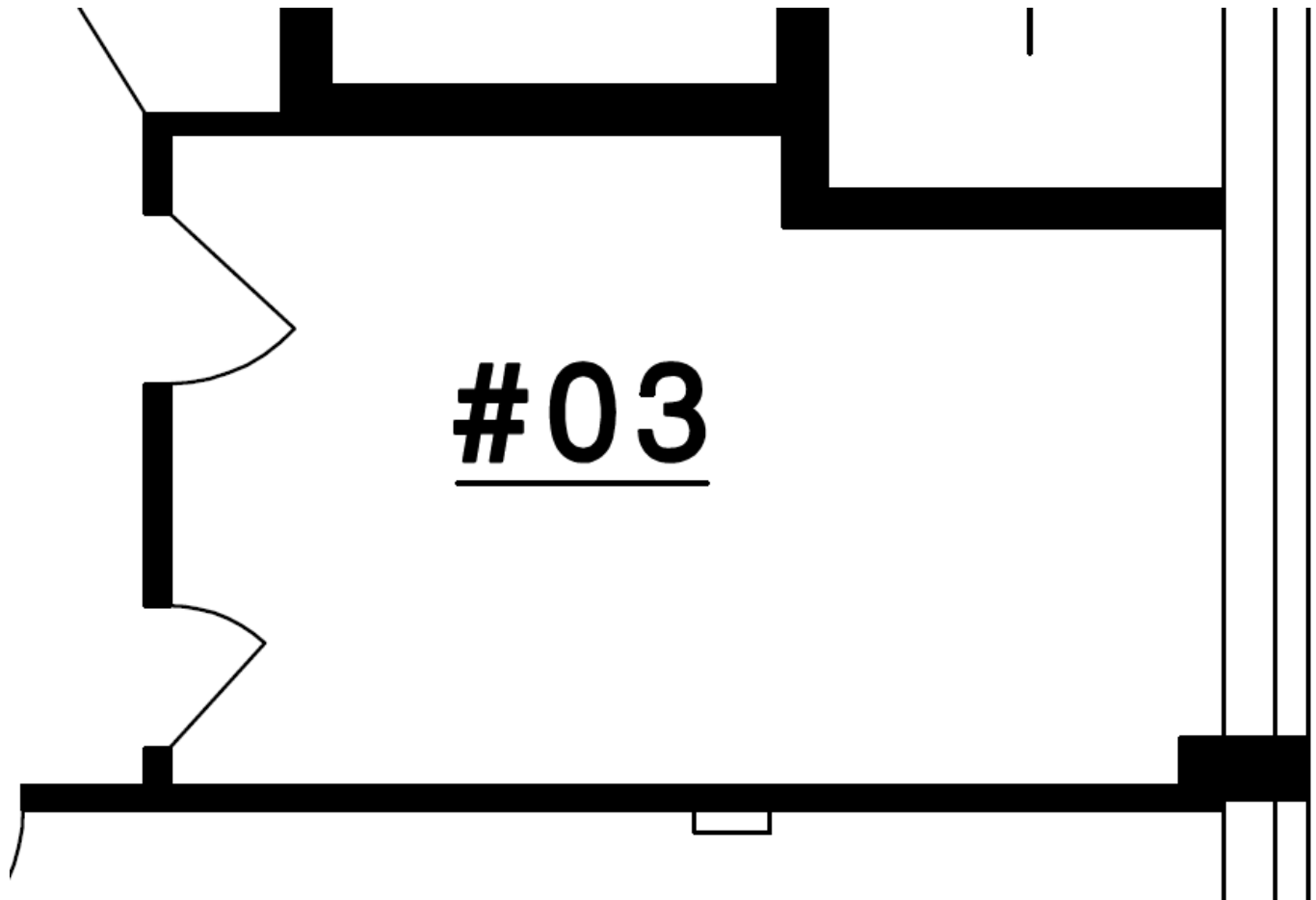
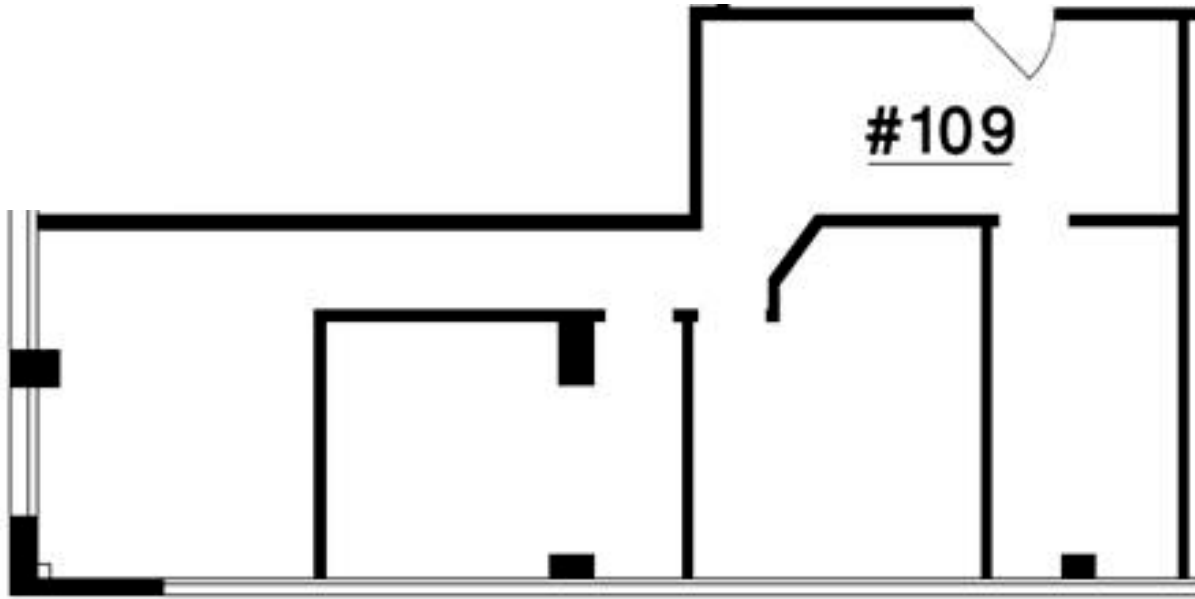


Suite 003

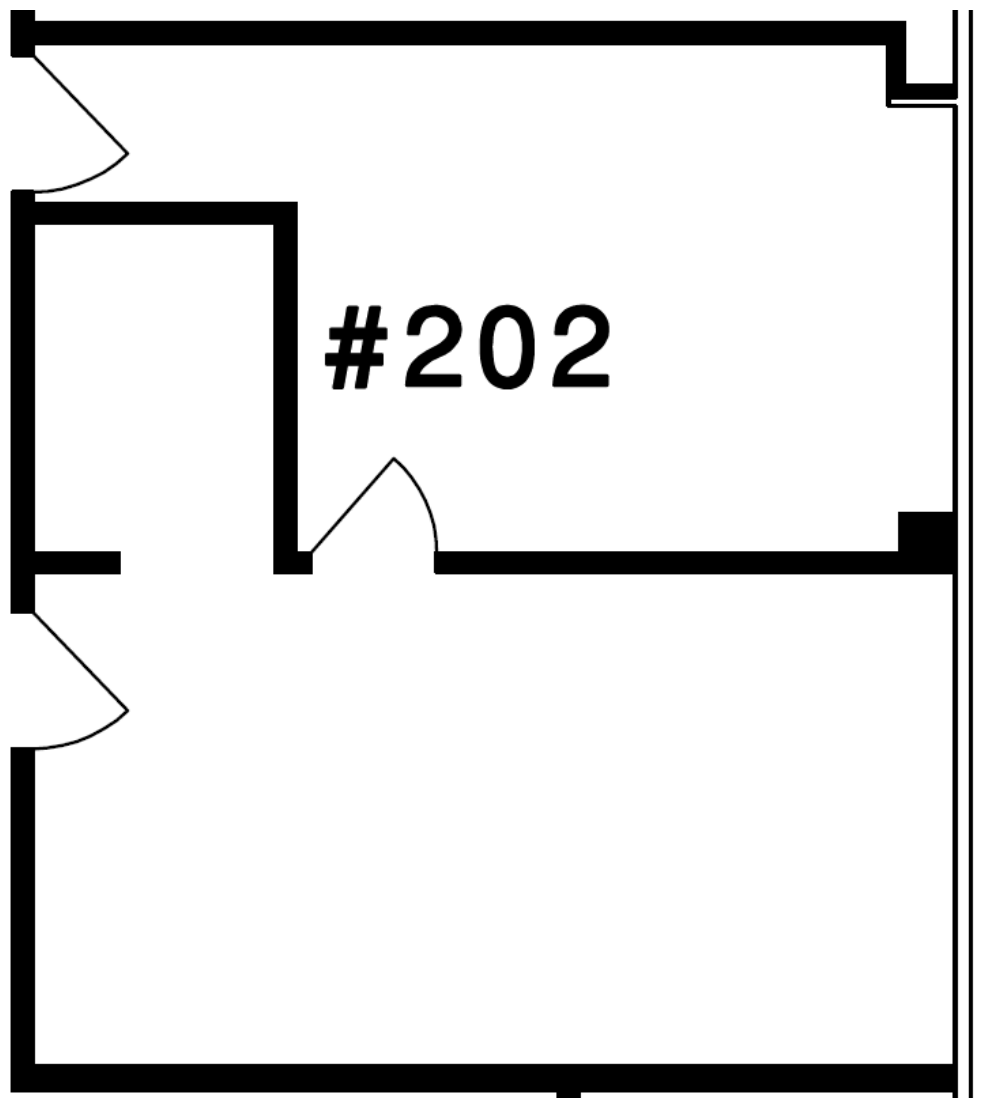


This 267 square foot space was formerly used as a café.

Suite 109

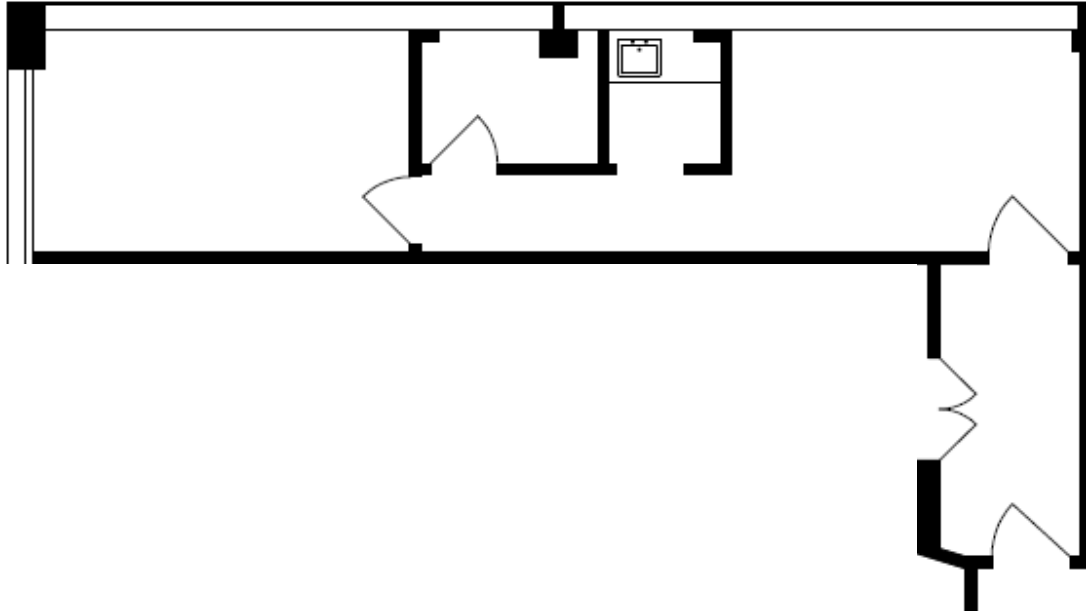


Suite 202



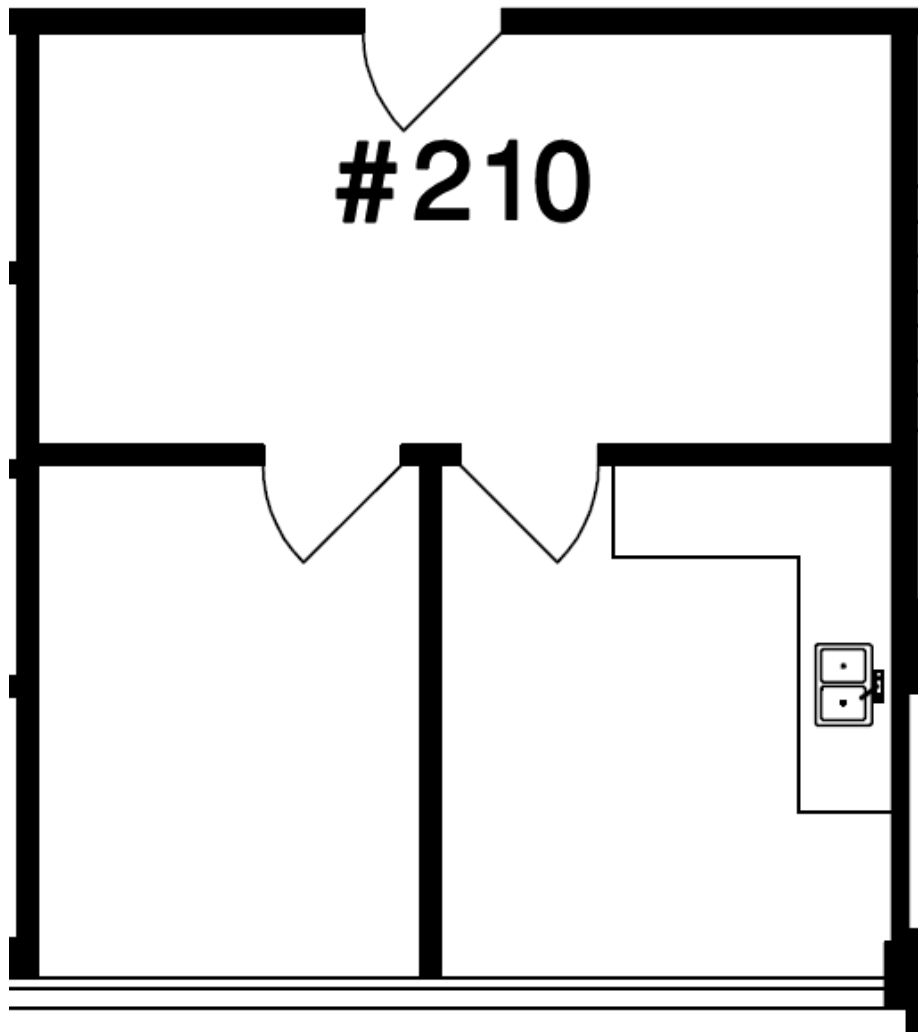
This 565 square foot space is located on the top floor with large windows overlooking 16th Avenue.

Suite 206



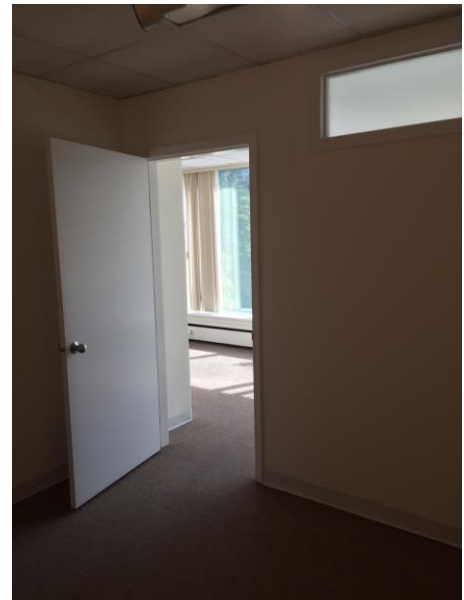
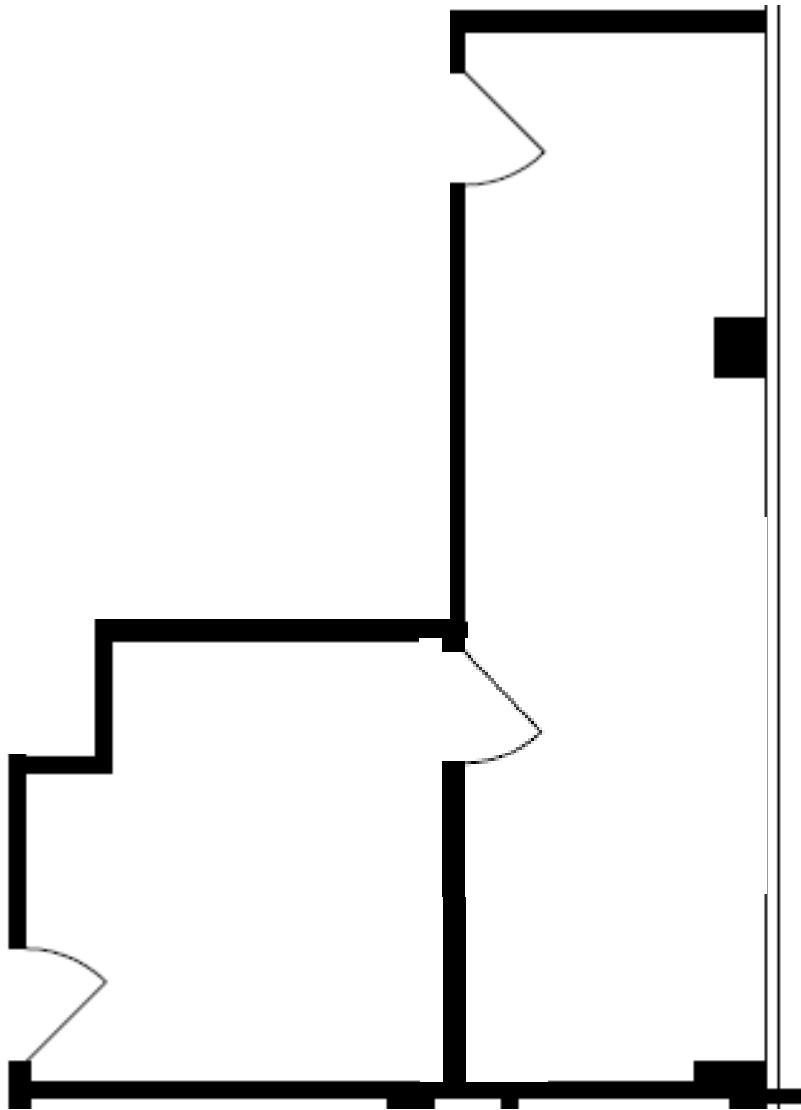
This 531 square foot space is located on the top floor with large windows overlooking Granville and Downtown Vancouver.

Suite 210



This second floor unit is 502 square feet.

Suite 220



This 470 square foot space is located on the second floor. The suite has southern exposure and windows overlooking 16th Avenue.